



# Birtcher Logistics Center Fontana

10958 Banana Ave  
Fontana, CA 92337

SWC of Santa Ana Ave and Banana Ave

New 36' clear height, state-of-the-art  
distribution facility



**330,048**  
Square Feet



**NEWMARK**





# Prime Central Location



## FREEWAYS

I-10 Freeway via Cherry Ave	1.3 Mi
I-15 Freeway	4.3 Mi
SR-60 Freeway	2.9 Mi
210 Freeway	6.1 Mi



## INTERMODAL/PORTS

Union Pacific Intermodal Yard	5.3 Mi
UP Colton Intermodal Yard	8.3 Mi
BNSF Intermodal Yard	13.4 Mi
Port of Los Angeles	66 Mi
Port of Long Beach	66 Mi

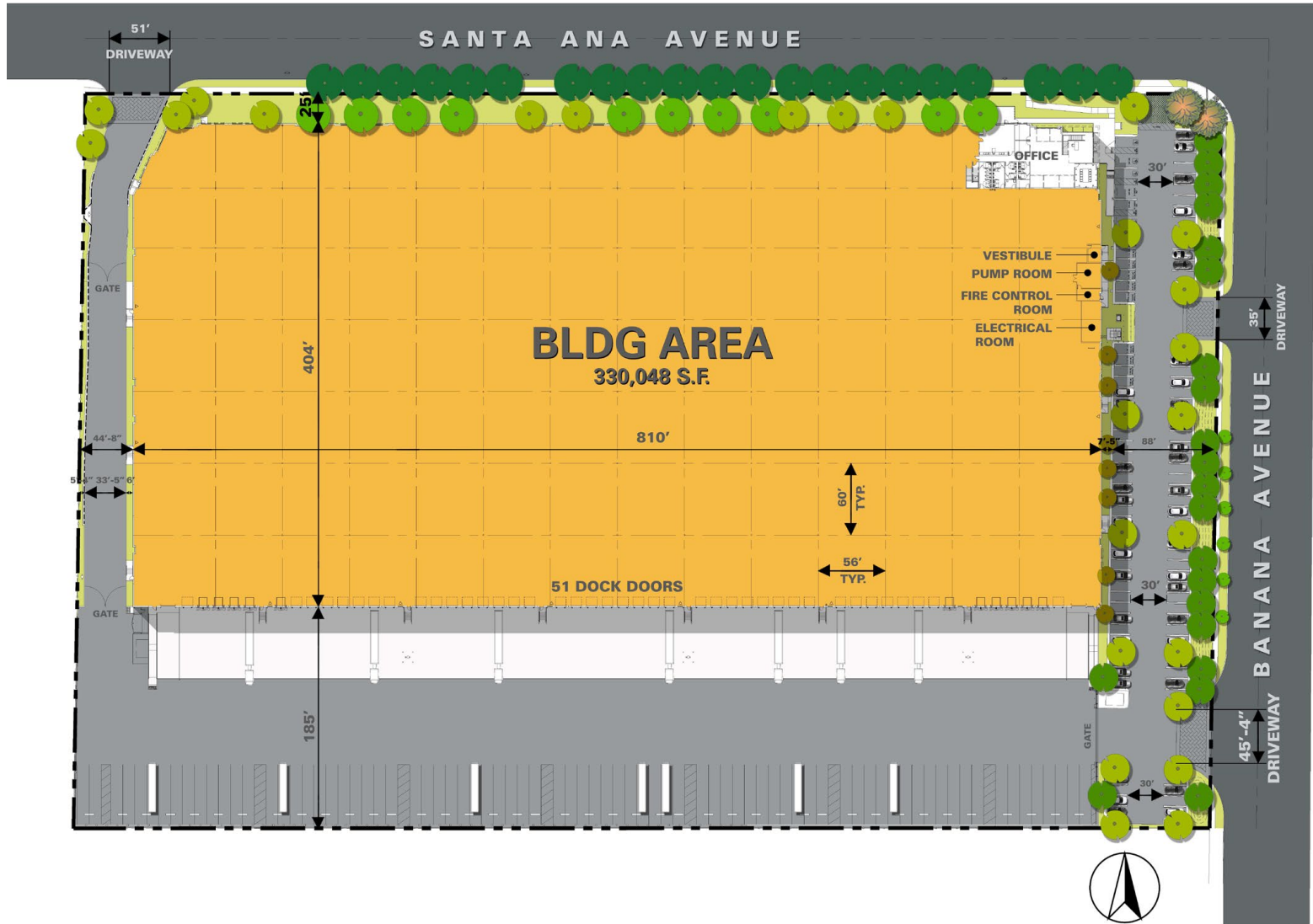


## AIRPORTS

Ontario International	5.2 Mi
San Bernardino International	17.9 Mi
John Wayne	44.8 Mi
LAX	61.5 Mi



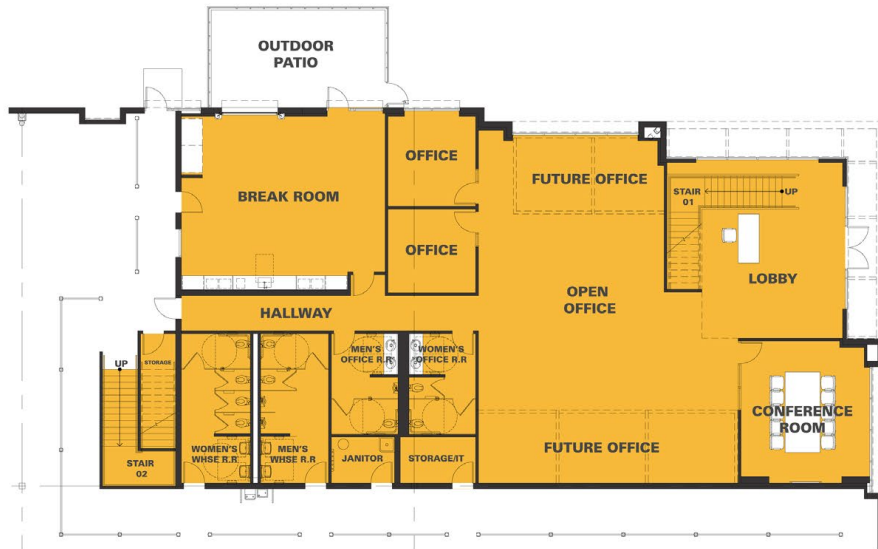
# Site Plan





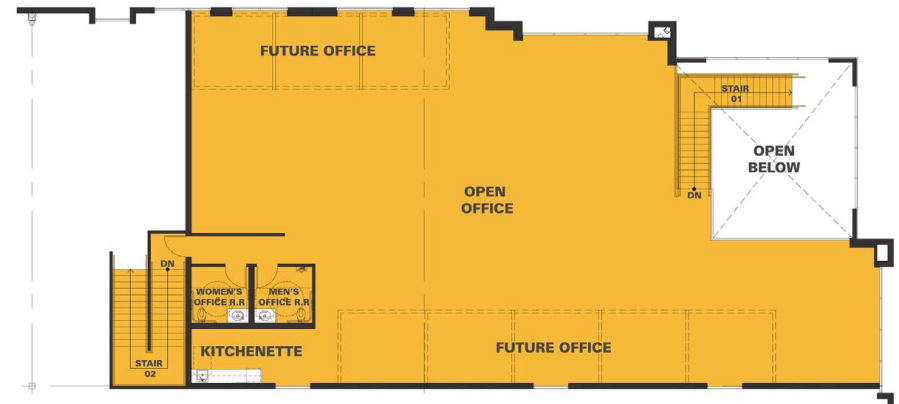
# Office Floor Plans

± 9,482 SF Two-story Office



## GROUND LEVEL

5,131 S.F.



## MEZZANINE LEVEL

4,351 S.F.





# Building Features

2 Grade-Level Loading Doors  
60' x 56' Typical Column Spacing  
60' x 56' in Speed Bays  
ESFR Sprinkler System  
(K-25 Sprinkler Head)  
Minimum 7" thick 4,000 PSI  
Reinforced Concrete Slab  
Flat Slab - Floor Flatness 50,  
Floor Levelness 35 w/ min. local  
values of FF35 & FL25



**±330,048  
TOTAL SF**



**36' CLEAR  
HEIGHT**



**51 DOCK-HIGH  
DOORS**



**185' TRUCK  
COURT FULLY  
SECURED**



**±9,482 SF  
TWO-STORY  
OFFICE**



**4,000 AMP  
SERVICE**



**78 TRAILER  
PARKING  
STALLS**

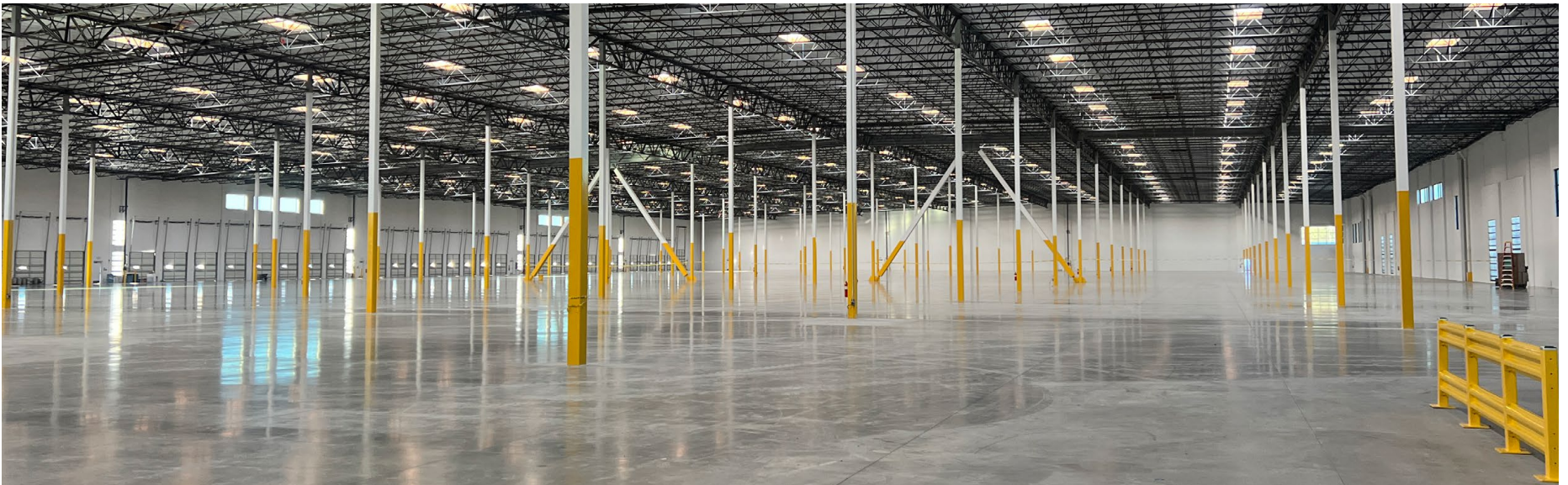


**91 AUTO  
PARKING  
STALLS**





# Site Photos





# Location Highlights





Holly Fessler  
Director, Asset & Property Mgmt.  
h.fessler@birtcher.com  
949.413.2206  
Lic. 01916609

## NEWMARK

Randy Lockhart  
randy.lockhart@nrmk.com  
909.974.4067  
Lic. 00974981

Craig McKenzie  
craig.mckenzie@nrmk.com  
626.664.1567  
Lic. 01371536

Steve Sprenger  
steve.sprenger@nrmk.com  
909.974.4078  
Lic. 01202806



Gerry Harvey  
gerry.harvey@kidder.com  
909.553.3753  
Lic. 00428295



*This information supplied herein is from sources we deem reliable. It is provided without any representation, warranty, or guarantee, expressed or implied as to its accuracy. Prospective Buyer or Tenant should conduct an independent investigation and verification of all matters deemed to be material, including, but not limited to, statements of income and expenses. Consult your attorney, accountant, or other professional advisor.*